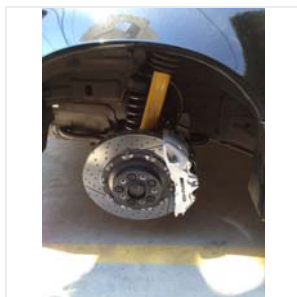




eBay Motors > Parts & Accessories > Car & Truck Parts > Brakes > Caliper Parts

Item: 301067470448



### R129 SL SL500 SL600 W124 E500 W201 190E BIG BREMBO/AMG BRAKE KIT COMPLETE SET

srsdesign ( 111 ★ )

Item condition: **Used**

Compatibility: See compatible vehicles

Price: **US \$4,999.00**

**Have one to sell?** Sell it yourself

[Learn more](#)

#### Shipping and handling

Shipping to: Will arrange for local pickup only (no shipping).

##### Local Pickup

You can contact your seller to arrange to pay for and pick up your item.

#### Return policy

##### Return policy details

No returns or exchanges, contact seller with questions.

#### Payment details

Payment method Preferred / Accepted



Accepted

#### Item specifics

Brand: Brembo

#### Seller's description

Hello

Up for sale is a complete set of slightly used big Brembo / AMG kit (front and rear) for R129 ; W124 and W201

The front brakes are Brembo 360mm two pieces floating rotors with 6 pistons Brembo fixed caliper including brake pads and stainless steel brake hoses!

The rear brakes are Brembo 330mm with 4 pistons fixed caliper including brake pads and stainless steel brake hoses!

The payment will be cash on pick up!!!

Call me for more info at 323 304 8050

Installation and modification instructions !

The rear brakes are bolt on directly to the car !  
 The bolt pattern for the caliper is the same ; offset on the rotor and the shape for the e-brake on the back of the rotor is the same!  
 The offset on the caliper to the rotor is the same ( You don't need washers or any modification to center the rotor inside the caliper)  
 The center bore of the rotor is the same 66.5mm bolt pattern for the rotor is the same 5X112  
 The holes on the rotor are for M12x1,5 bolts  
 The only think is trim the backing/dust plate for the bigger caliper

The front brakes are bolt on directly to the car with two very minor modification!  
 R129; W124 and W201 have the same steering knuckle .....  
 The steering knuckle have steering limiter or stopper under the bottom mouting holes for the caliper see pic 1 from the last three pics  
 The Brembo calipers are way bigger compare two the OEM once , so in order to instal them you have to cut the stopper as is going to stay on the way on the caliper (you will not be able to get the caliper close enough to the knuckle so u can put the lower mounting bolt)  
 Cutting the stopper doesn't harm anything ..... The car can not turn more then that any way .....You will not notice that the stopper is not there any more later when you make turns !  
 So cutting the stopper and trimming the backing/dust plate for the bigger caliper will make able to instal the calipers see pic 2 from the last three pics  
 The bolt pattern for the caliper is the same ! The center bore of the rotor is the same 66.5mm bolt pattern for the rotor is the same 5X112  
 The holes on the rotor are for M12x1,5 bolts  
 The offset for the rotor is the same  
 The offset on the caliper to the rotor require 2mm washer between the caliper and the knuckle in order to center the rotor inside the caliper see pic 3 from the last three pics

So  
 You need to trim the backing/dust plates for bigger calipers  
 You need to cut the stopper on front knuckles  
 You need 4 washers 2mm thickness in order to center the front rotors inside the calipers

You need 18 " wheels to clear the larger front brakes

Regards !

**Questions and answers about this item**

Q: Do these bolt on directly to a W124 E500 or do they need modifications? What wheel size do they require?  
 A: Hello there The rear brakes are bolt directly to the car ! The bolt pattern for the caliper is the same ; offset on the rotor and the shape for the e-brake on the back of the rotor is the same! The offset on the caliper to the rotor is the same ( You don't need washers or any modification to center the rotor inside the caliper) The center bore of the rotor is the same 66.5mm bolt pattern for the rotor is the same 5X112 The holes on the rotor for the bolts are for M12x1,5 bolts The only think is trim the backing/dust plate for the bigger caliper The front brakes are bolt on directly to the car with two very minor modification! R129; W124 and W201 have the same steering knuckle ..... The steering knuckle have steering limiter or stopper under the bottom mouting holes for the caliper The Brembo calipers are way bigger compare two the OEM once , so in order to instal them you have to cut the stopper as is going to stay on the way on the caliper (you will not be able to get the caliper close enough to the knuckle so u can put the lower mounting bolt) Cutting the stopper doesn't harm anything ..... The car can not turn more then that any way .....You will not notice that the stopper is not there any more later when you make turns ! So cutting the stopper and trimming the backing/dust plate for the bigger caliper will make able to instal the calipers see The bolt pattern for the caliper is the same ! The center bore of the rotor is the same 66.5mm bolt pattern for the rotor is the same 5X112 The holes on the rotor for the bolts are for M12x1,5 bolts The offset for the rotor is the same The offset on the caliper to the rotor require 2mm washer between the caliper and the knuckle in order to center the rotor inside the caliper So You need to trim the backing/dust plates for bigger calipers You need to cut the stopper on front knuckles You need 4 washers 2mm thickness in order to center the front rotors inside the calipers U need 18 " wheels

Jan 14, 2014

**Listing images**







---

This page is formatted for printing and does not include all the information contained in the listing. You must select all options to print all of the information in the listing including the listing summary, seller's description, and images.

---

Copyright © 1995-2014 eBay Inc. All Rights Reserved. [User Agreement](#), [Privacy](#) and [Cookies](#).