

01-2100 Removing and installing timing case cover

Preceding work:

Bottom engine compartment panel removed (Maintenance Manual Volume 2, Op. no. 6190).

Radiator removed (20-4200).

Viscous fan clutch removed (20-3120).

Tensioning device removed (13-3450).

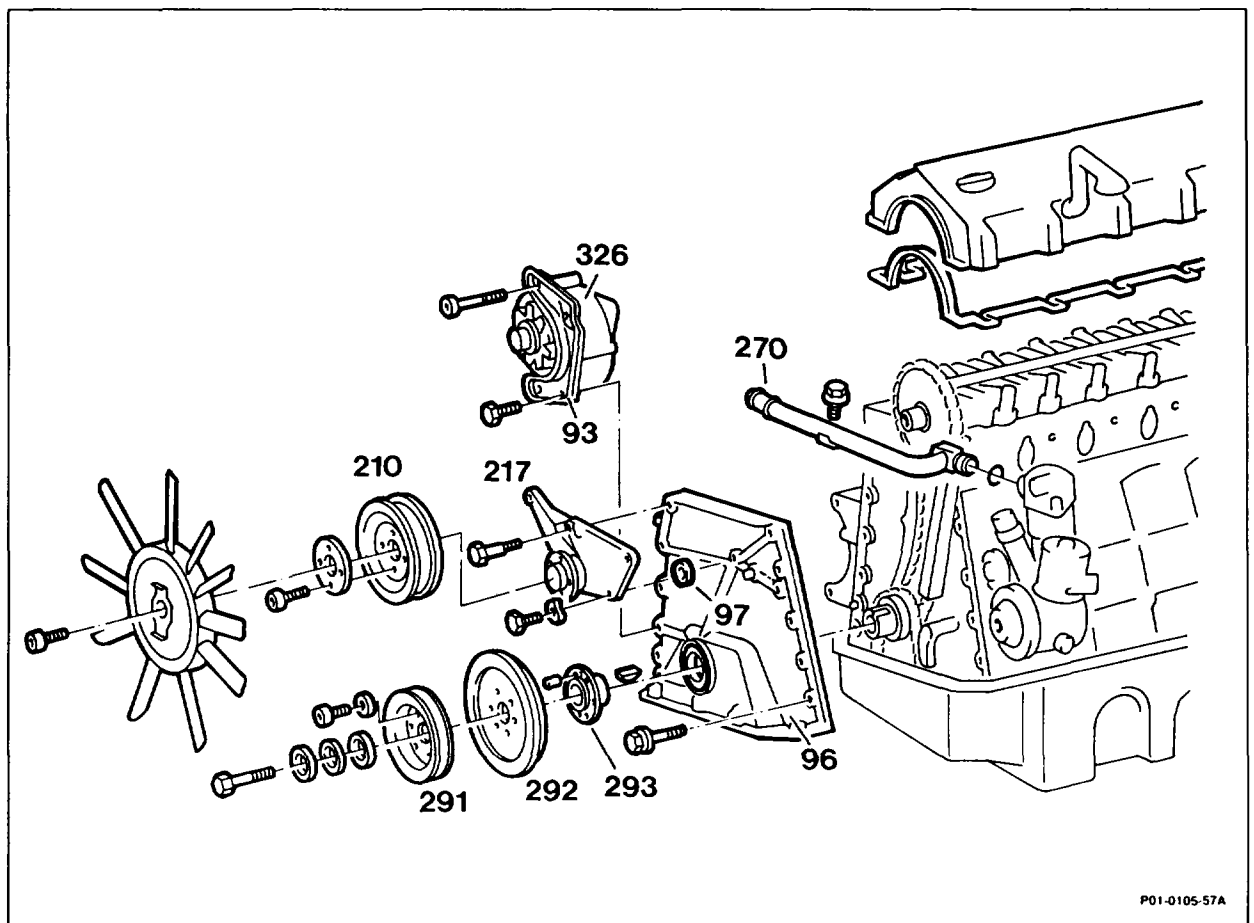
Front cover at top removed (01-2120).

Viscous fan coupling bearing bracket removed (20-3140).

Belt pulley/vibration damper and hub removed (03-3420).

Operation no. of operation texts and work units or standard texts and flat rates

01-8000 - 01-8009



P01-0105-57A

If car fitted with self-leveling suspension: pipe . . .	detach, attach (step 1)
Power steering pump	unbolt, bolt on (step 2)
Alternator (326) with bracket (93) and TDC sensor	remove, install (steps 3 to 5)
If air injection fitted: air pump with combination bracket	remove, install



Timing chain to camshaft sprocket	mark with colored marking (step 7)
Chain tensioner	remove, install (05-3100)
Timing case cover (96) at front and bottom	unbolt, bolt on. M6 bolts 10 Nm, M8 bolts 25 Nm (steps 9 and 10)
Timing case cover (96) with TDC sensor bracket	take off, seal with sealant 002 989 45 20 10 and fit on (step 10).
	Note
	On 4MATIC models, additionally coat sealing surface on oil sump with sealant 001 989 61 20 10.
Seal (97)	replace (step 10)
Engine	check oil level
Engine	run and check for leaks

Tightening torques in Nm

Bolts of oil sump		10
Timing case cover to crankcase	M6	10
	M8	25

Modification of attachment of timing case cover to bottom of crankcase

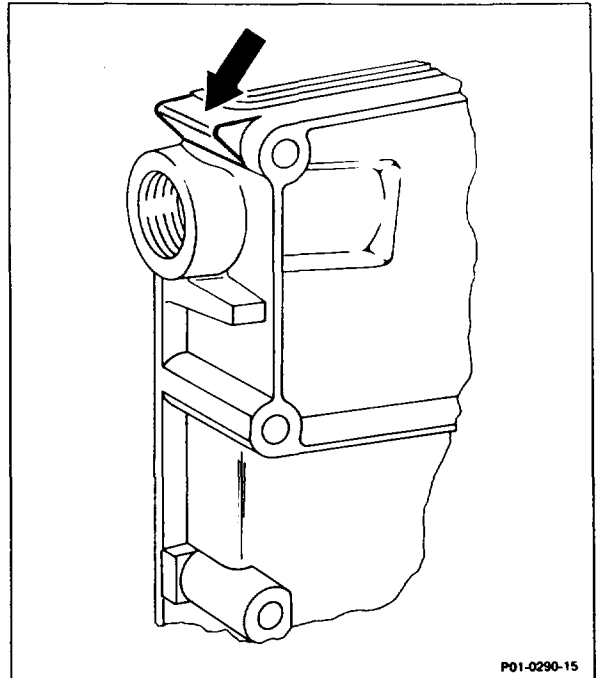
To achieve standardization with the engine 104, three M8 × 60 bolts + washers are used (was M8 × 55); production breakpoint: 03/1989



Reinforcing on timing case cover

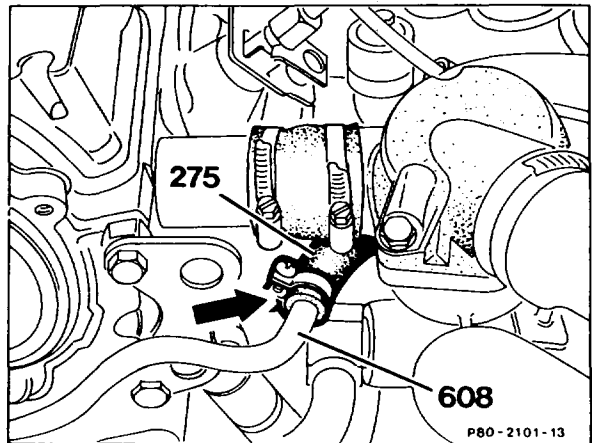
The timing case cover is provided with a reinforcing rib at the chain tensioner mount (arrow).

This avoids the chain tensioner jamming when installed; production breakpoint 02/1986.

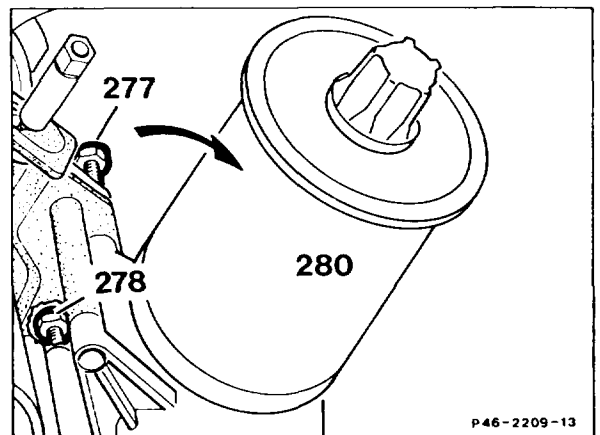


Removal, installation

1 On models with self-leveling suspension: detach clip (arrow). Pull off hose (275) and seal pipe (608).



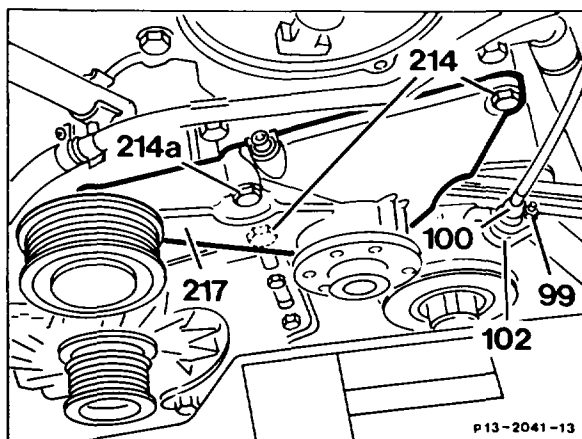
2 Unscrew bolts (277, 278) swivel power steering pump (280) in direction of arrow.



- 3 Unscrew nut (99). Take off TDC sensor (100) together with cable and place to the side.

Note

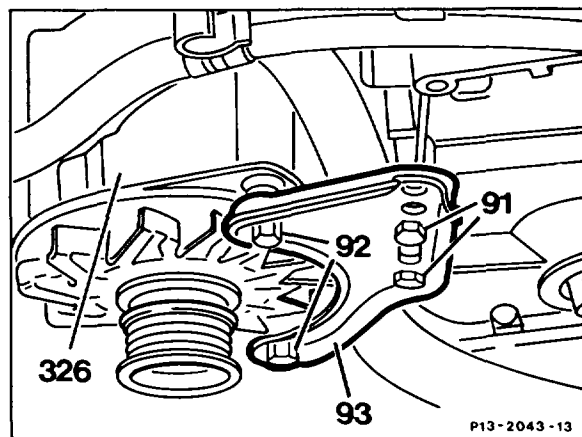
Bracket of TDC sensor (102) remains on timing case cover. If timing case cover is replaced, adjust TDC sensor (03-3450).



- 4 Unplug connector at alternator (326).

- 5 Unscrew bolts (91, 92). Remove bracket (93) and alternator (326).

- 6 If air injection fitted: unbolt air pump together with combination support.

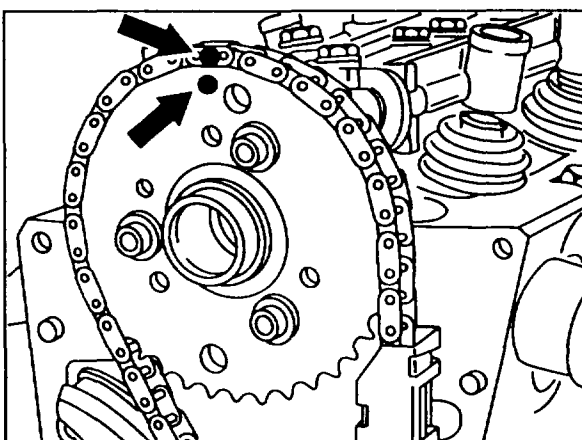


- 7 Mark timing case to camshaft sprocket with colored marking (arrows).

Installation note

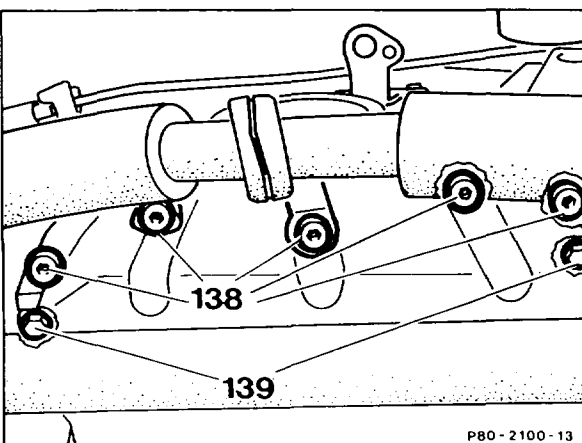
Ensure that the colored markings on the camshaft sprocket and on the timing chain are positioned one above the other. Check basic position of camshaft (05-2150).

- 8 Remove chain tensioner (05-3100).



- 9 Unscrew bolts (138 and 139) at the oil sump. If model fitted with self-leveling suspension: place retaining clip together with high pressure hose to the side.

Tightening torque M6 bolts 10 Nm



10 Unscrew bolts (95, 105) and remove timing case cover (96).

Tightening torques:

M8 bolts 21 Nm



Do not damage gasket of oil sump!

If necessary, replace gasket of oil sump (01-3100).

Installation note

Examine radial seal (295); replace, if necessary (03-3240).

Clean crankcase and timing case cover. Apply a uniform coating of sealant 002 989 45 20 10 to the sealing surface of timing case cover.

On **4MATIC** models: additionally clean the sealing surfaces of the oil sump and coat with sealant 001 989 61 20 10.

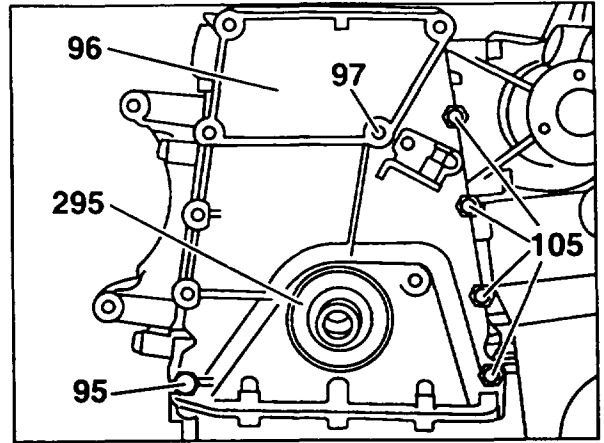
Replace seal (97).

The timing case cover is positioned by two tensioning sleeves on the crankcase.

11 Install in the reverse order.

12 Check oil level in engine, adjust to correct level if necessary.

13 Run engine and check for leaks.



P01-6046-13

