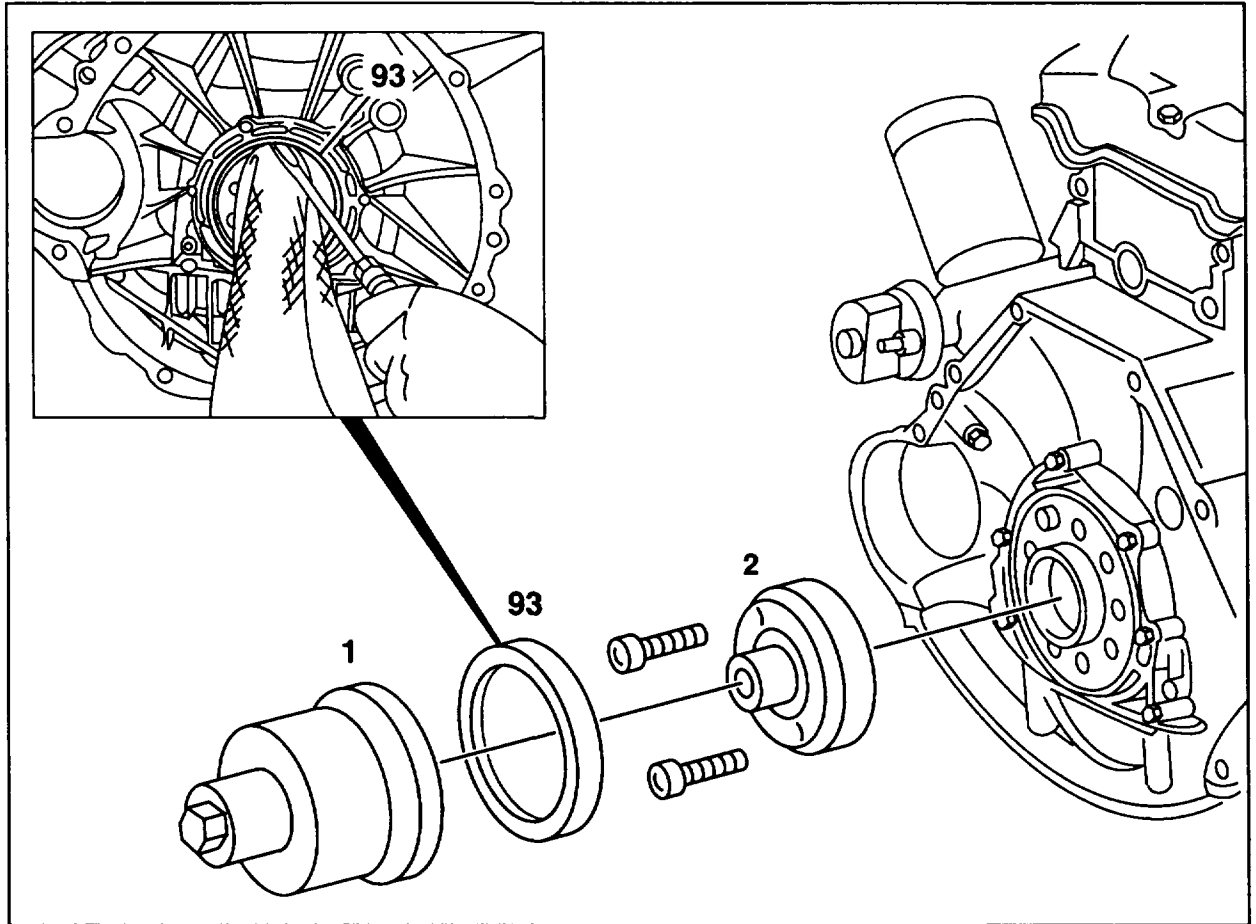


03-3270 Replacing rear crankshaft radial seal

Preceding work:
 Manual or automatic transmission removed
 (26-020 or 27-600).
 Flywheel or driven plate removed (03-4100).
 Two-mass flywheel removed (03-4620).

Operation no. of operation texts and work units or standard texts
 and flat rates
 03-3063 - 03-3301



P03-5354-57

Radial shaft seal (93) prise out with a screwdriver



Do not damage crankshaft and mounting hole for radial shaft seal. Use a clean cloth as a base.

Edge of mounting hole for radial shaft seal (93) .. deburr

Contact surface of radial seal (93) at crankshaft . check for groove caused by wear; if groove exists, install repair radial seal with sealing lip offset 3 mm to the inside.

Inner part of insertion tool (2) attach to crankshaft.

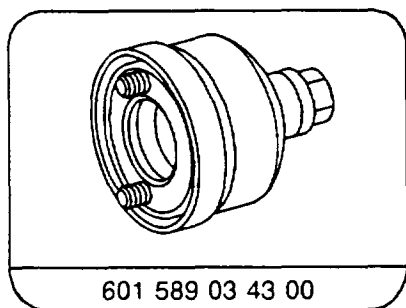
Special tool 601 589 03 43 00

Sealing lip of radial shaft seal (93)	moisten with engine oil
Radial shaft seal (93)	fit on to inner part of insertion tool (2) and press into end cover as far as a stop with insertion bell (1)
Engine	run and check for leaks (01-2240)



Do not use grease. Grease prevents the return swirl on the sealing lip of the radial shaft seal transporting back the engine oil.

Special tool



Note

The radial seal is pressed into the end cover flush without the use of sealant. The end cover is fixed in position on the crankcase by 2 dowel pins and bolted on.

An oil leak can be determined after spraying the cleaned and dried surrounding area with Mercedes-Benz white contrast spray 000 989 03 59.

The mounting holes in the crankshaft are designed as blind holes.

