

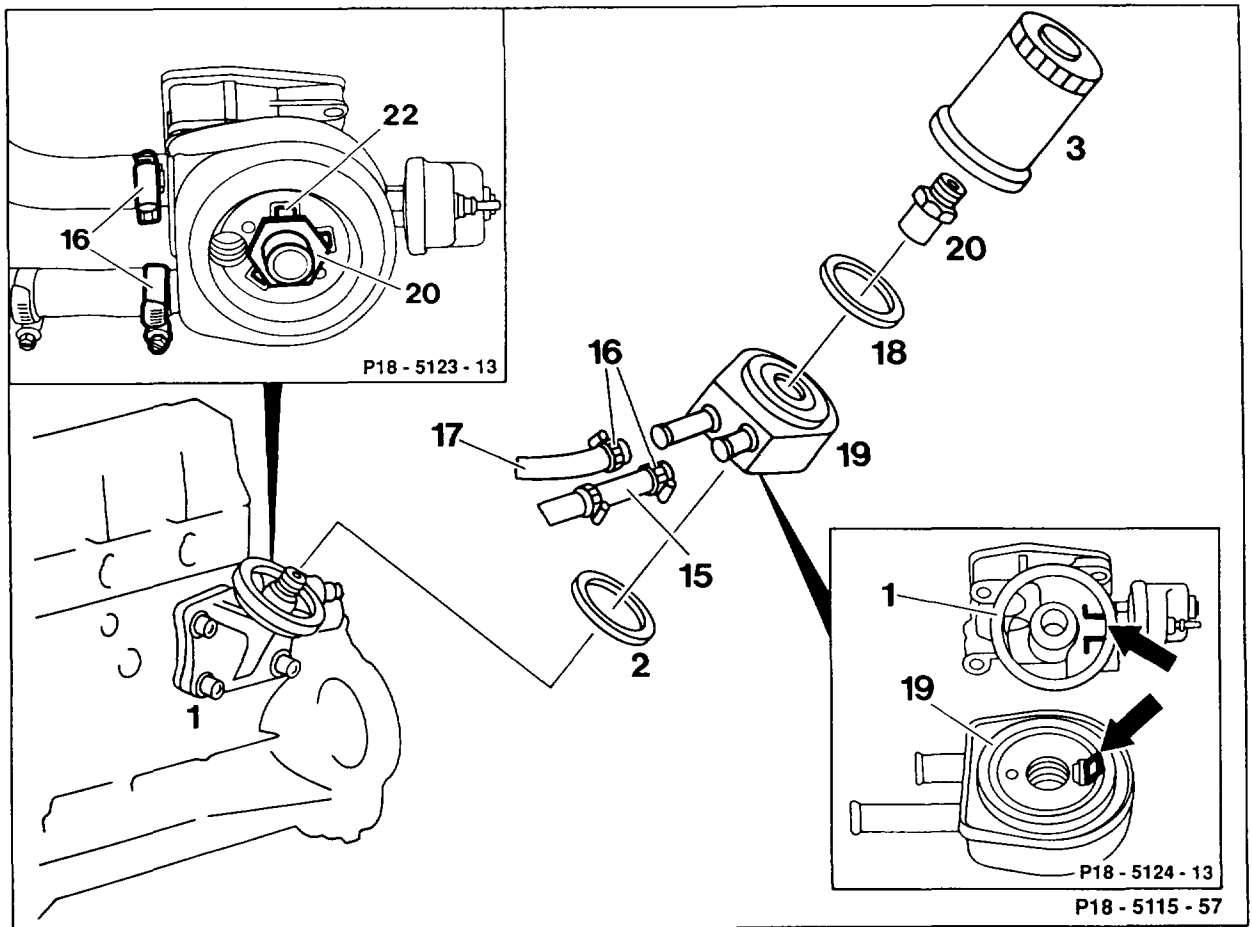
18-1320 Removing and installing oil-to-coolant heat exchanger

Preceding work:

Air cleaner removed (09-1051).

Model 126: starter removed (15-700).

Operation no. of operation texts and work units or standard texts and flat rates



Coolant at crankcase	drain, pour in (20-0100).
Replaceable cartridge (3)	remove, install (18-0020) with wrench socket 103 589 02 09 00.
Hose strap (16)	slacken, tighten.
Securing tab (22)	bend up.
Sleeve nut (20)	unscrew.
Oil heat exchanger	detach from cooling hoses (15) and (17), remove, install.

Installation notes

Gasket (2) of heat exchanger (19)	replace.
---	----------



The anti-twist lock (arrow) on the heat exchanger (19) must engage in the recess (arrow) in the bottom part of the oil filter (1).

Sleeve nut (20) tighten to 40 Nm and secure with metal tabs (22).

Cooling system check for leaks (20–0170).

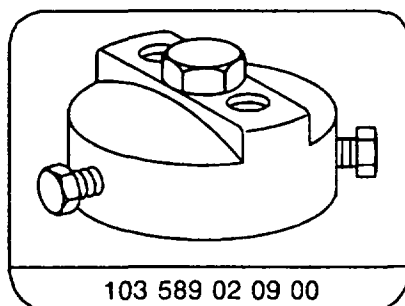
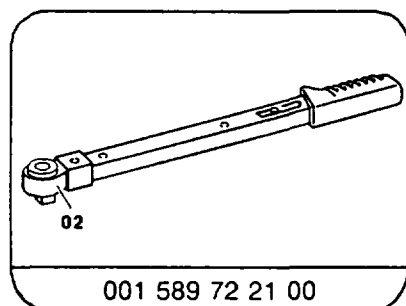
Engine run, check for leaks.

Engine oil level check, adjust to correct level.

Tightening torque in Nm

Sleeve nut of oil-to-coolant heat exchanger	40
---	----

Special tools



Commercially available tool

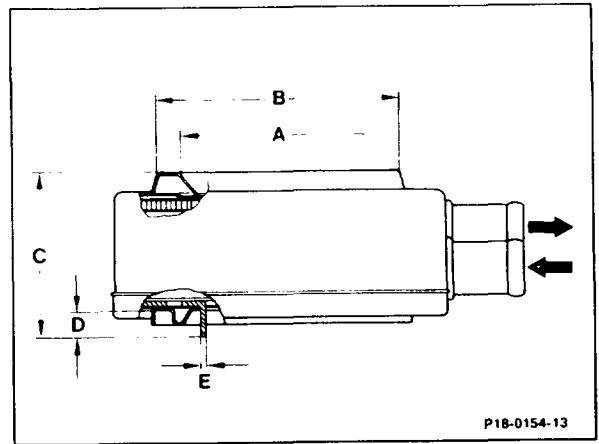
7 mm socket wrench hexagon on flexible shaft for hose clip with worm drive	eg.	Hazet D-42857 Remscheid Order no. 426-7
--	-----	---

Reinforcing of sealing surface on heat exchanger to oil filter on models with automatic transmission

The sealing surface to the oil filter element has been reinforced.

Dimension (A) is now 60.5 mm (was 64 mm) in diameter, dimension (B) 73 mm (was 74 mm) in diameter.

Production breakpoint: 06/1986



Locating web reinforced

The locating web has been reinforced.

Dimension (C) is now 52.4 mm (was 52.9 mm), dimension (D) 7.7 mm (was 9.0 mm), dimension (E) 1.8 mm (was 0.8 mm).

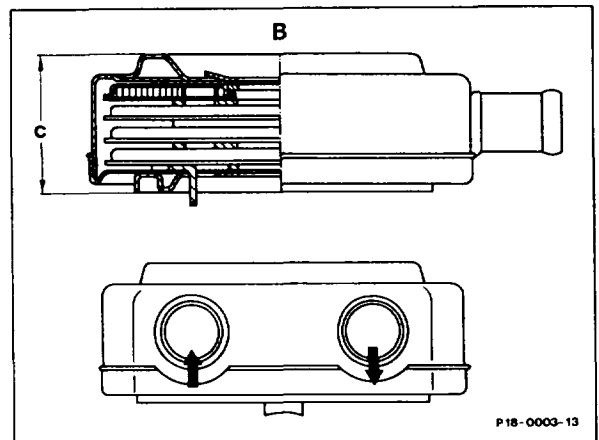
Production breakpoint: 07/1986

4-plate heat exchanger instead of 6-plate heat exchanger on models with automatic transmission

A 4-plate heat exchanger is now used (previously 6-plate heat exchanger). The height of the housing (c) is 36.6 mm (was 49 mm); the sleeve nut is 48 mm long (was 56.5 mm).

Bracket and shape of coolant pipe from heat exchanger to coolant pump and of heating pipe from cylinder head to heater have been modified.

B present version



Production breakpoint: 06/1988

Coolant feed pipe extended on models with automatic transmission

The coolant feed pipe has been extended and the coolant hoses modified to facilitate removal and installation.

Production breakpoint: 06/1989

